



Lapley, Stretton
& Wheaton Aston
Parish Council

News & Views 2020 – Issue 1

Latest News

Covid-19 - The Parish Council hopes that you are all staying safe and well at this difficult time. We urge everyone to keep upto to date with the advice/instructions given by [central government](#) and [the NHS](#) to help stop the spread of the Coronavirus (COVID-19). The Parish Council will continue to monitor information and advice from local and national sources and post, where applicable, update items on [our website](#) and [Facebook Page](#).

The first port of call for assistance is South Staffordshire District Council. If they can't help, they will put you in touch with the local volunteer network. Please contact Barbara on 07828523238 bhsandland@sky.com or Rev Dale on 07977 310049, 01785 840395 revrachedale@gmail.com.



**South Staffordshire
COVID-19 helpline**
01902 696499
Email: Covid-19@sstaffs.gov.uk



Localities+

Monday to Friday, 9am to 5pm.

If you are over 70 or under 70 with underlying health conditions, self-isolating but have no friends, family or neighbours to help, you're not alone.

Help and support is available so please contact us if you need help with:

- Collecting prescriptions.
- Shopping.
- Topping up gas or electricity meters.
- Dog walking.
- Or if you're feeling anxious or lonely and need to talk to someone.





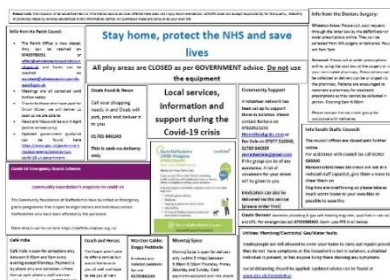
South Staffordshire Council
www.sstaffs.gov.uk/coronavirus

However, even as an individual, you can still keep an eye out for neighbours who may need help. A note through the door or a call on the phone can make a huge difference to someone who is now completely alone.

The Parish Council itself is reviewing how it operates. The Parish Clerk and Assistant are working from home as the office has been closed. Parish meetings have been cancelled until further notice, however we are looking into holding virtual meetings once the legislation has been passed to allow it. Updates will be provided via the noticeboards and the Parish Council website as soon as we know how we are legally able to proceed.

Marston Field and Primrose Gardens Play areas have been closed until further notice following advice from the Government. The opening of Broadholes leisure garden has been delayed until further notice.

Look out for the regular updates from the Parish Council (Click on the picture below to take you to the 2nd April update.)



NEW fund to keep fighting Covid-19



Covid-19 Support Fund

As the implications of Covid-19 are felt across communities, voluntary groups across Staffordshire are leading the fight to help people stay safe and well. Whilst brilliant work is happening now, it's just as important that the voluntary sector has what it needs to continue to thrive once the crisis has passed.

The county council continues to help in many ways, including supporting volunteer recruitment to voluntary groups and front-line care work. The iCare campaign, for example, is calling for members of the public to step out of their comfort zone and volunteer to help elderly and vulnerable people with the personal care they rely on, keeping people out of hospital and reducing the pressures on the NHS. We are already seeing a fantastic response.

Now financial help is available to ensure that communities are resilient, connected and safe during this crisis.

A new, fast-track grant scheme is now up and running and waiting for community and voluntary groups to apply. No match funding is required from community groups.

Each county councillor now has £2,500 to support community and voluntary groups in their area. Funding can be used by community groups (individuals that have come together to run a project - individuals cannot be funded) , or by existing volunteer/community groups to keep activity running that is supporting people through the Covid-19 crisis or to keep running as a service - e.g. if a significant loss of income through a lack of participants while overheads still need to be paid.

Grants will be paid as soon as possible once accepted. If funding is not available through this fund then we will sign post to other sources of funding, including The Community Foundation Response and Recovery Fund.

To find out more and get going:

- 1) Read the guidance to understand what can and cannot be funded
- 2) Please do your research to make sure that no other voluntary group is carrying out the same activity - can you join up?
- 3) Speak to your local county councillor before applying
- 4) Fill in the online form to apply

At present, all monies must be spent by 30th June 2020 but this is subject to review.

Feature on Climate Change

Tackling Climate Change – Although Covid-19 is dominating the headlines, the Parish Council has not forgotten its commitment to tackling Climate Change. The Parish Council has adopted a new Climate Change policy. The Parish Council pledges to:

- When considering planning applications, consider how an application can aid the environment and if it supports renewable energy.
- Move to a 'paperless council' where councillors will be provided with a tablet for meeting purposes, this will remove the requirement of paper copies in meetings.
- Encourage office staff move to a "paperless" office
- Engage with the Local Plan and future developments regarding different sources of energy generation, i.e. solar panels.
- Encourage young people to engage with activities which are already taking place.
- Encourage residents and employees to walk, cycle or use public transport or car-share where possible.
- Encourage residents to increase biodiversity in their back gardens.
- Bring together groups of people for bulk purchases or purchase goods with other local authorities
- Oppose high-carbon developments, promoting sustainable alternatives instead.
- Encourage national changes to bus services regulations, so all areas can regulate buses as London does, and urban profit-making routes can cross-fund loss making rural routes.
- Reduce pesticide use and other harmful activities.
- Encourage residents and local landowners to take part in tree planting. The Tree Charter, developed by the Woodland Trust, provides excellent guidance on how to increase tree cover. The National Association of Local Councils website provides case studies where it has been used.
- Encourage buying green electricity as it helps develop new renewable energy. Friends of the Earth has identified Ecotricity, Good Energy and Octopus as the greenest energy companies.
- Support the introduction of safe walking and cycle routes and, where necessary, work in partnership with the local authority to deliver them. To introduce a 'map board' with the local walking routes highlighted.
- Ensure the climate change or nature implications of decisions are known before making them.



Bird Boxes and Bug Hotels have been installed around the Parish.

What's On

Brewood Community Managed Library – Due to the Coronavirus outbreak all Libraries in Staffordshire are now closed, and service is suspended until further notice. This includes all Staffordshire county managed libraries, community managed libraries, the mobile library service, the home reader service, the schools' library service. This decision supports the government's most recent advice to the public to implement social distancing and to stay at home.

All loans will be automatically extended until libraries reopen and fines will not be charged for late returns so please do not worry if you have books at home, please continue to enjoy them.

There is an [online eLibrary](#) for free eBooks, eAudio, eMagazines and newspapers is available for you to use, as are a selection of [free to access online resources](#).

If you're not already a member, or know somebody who could benefit from these services, follow this link to [join](#). It's easy and it's free. To view what is on your library account, please login to the [library catalogue](#) with your card number and PIN.

Do keep in touch by following Staffordshire Libraries on www.facebook.com/staffordshirelibraries and/or Twitter @StaffsLibraries where they are posting information, advice and sharing what else is going on in the world of libraries!

St Mary's, Wheaton Aston & All Saints - The churches are currently closed to coronavirus. Virtual services can be seen via the Churches Facebook Page - www.facebook.com/WatershedBenefice. Please contact Rev Rachel or Rev Cath for more details.

Looking after our mental health has never been more important. The Church of England has updated their mental health resources to help you in this time of uncertainty. Access them at any time, for free, at cofe.io/MentalHealth. Below are their Top Five Tips for Dealing with Loneliness and isolation.

Dealing with **Loneliness** and **Isolation: FIVE TOP TIPS**



1. Pray - light a candle, if safe, and pray for hope, faith and strength to keep loving and caring for each other during this time of struggle.



2. Talk about how you feel.

This may be difficult if you are self-isolating, but use the phone, internet and social media. If you need to contact a counsellor, this can be arranged by your GP, local agencies or privately. Samaritans are there 24 hours a day, every day, and it's free to call them on 116 123.



3. Focus on the things that you can change, not on the things you can't.



4. Look after yourself - physically, emotionally, spiritually.

Plan things that you enjoy at regular intervals during the day - a TV programme, a phone call, a book, a favourite dish, a game.



5. Look after others - even if only in small ways, but do what you can:

a smile, a kind word, writing a letter or an email.

Useful Information

South Staffordshire District Council – The Council Offices are now closed to the public and residents should use alternative ways of contacting the Council rather than visiting in person. 'My Account', the Council's online facility, gives residents online access to council services 24/7. You can register or access it at: www.sstaffs.gov.uk/myaccount
Email: info@sstaffs.gov.uk
General enquiries: 01902 696000

Citizens Advice – Contact Staffordshire South West Citizens Advice Bureau on 03444 111 444

Voluntary Car Scheme – The Car scheme is now closed due to the Covid-19 outbreak.

Support Staffordshire – offers charities, voluntary and community groups in Staffordshire support, advice and training on how to set up and run your group, support for volunteers and discounted services. Tel 0300 777 1207 or email to info@supportstaffordshire.org.uk

Damage to the Highway – Although Staffordshire County Council office are closed to the public, you can report potholes/damaged pavements / problems with lighting columns and road signs on the Staffordshire County Council website, or download the "My Staffs" app, which let you send in photos and locations straight from your phone. If you do go out to take photos, please make sure this is a part of your daily exercise as allowed by Central Government and ensure you keep 2 metre distance from others outside of your household member.

If you see it, report it! - If you see a crime in progress, call 999 immediately. Please report non-urgent crime including graffiti, anti-social behaviour, and damage by calling the police on 101. Officers can only investigate matters which are reported.

Staffordshire Police Smart Alert - Get free, localised crime alerts and community safety advice with the Staffordshire Smart Alert App. This can be downloaded for both Apple and Android devices at: www.staffordshiresmartalert.uk

Crime Prevention / Cybercrime - There is a wealth of advice on the Staffordshire Police website. For more information, visit: www.staffordshire.police.uk/crimeprevention, www.staffordshire.police.uk/cybercrime

South Staffs Community Lottery – You could win up to £25,000, and help support local good causes by taking part in the South Staffordshire Community Lottery. This weekly online lottery takes place every Saturday night at 8pm. Tickets can be purchased from 01902 213777 or at www.southstaffslottery.co.uk

Aspire Active Camps –Please contact the venues direct for information on if camps will be running during the holidays. www.aspire-sports.co.uk

South Staffs Leisure Centres (Penkridge, Codsall, Wombourne & Cheslyn Hay) – These are all closed until further notice, however they have been posting exercise videos on their Facebook page for those looking to keep fit. www.facebook.com/penkridge

South Staffordshire Work Clubs –Although the work clubs have stopped meeting, you can still get advice. Tel: Cllr Val Chapman 07718 911367 or email: v.chapman@sstaffs.gov.uk

Your Council

<u>COUNCILLOR</u>	<u>WARD</u>	<u>Email</u>
A Anderson	Stretton	a.anderson@wheatonastonparishcouncil.gov.uk
B Cross	Wheaton Aston	b.cross@wheatonastonparishcouncil.gov.uk
E Dadd	Stretton	e.dadd@wheatonastonparishcouncil.gov.uk
M Griffiths	Lapley	m.griffiths@wheatonastonparishcouncil.gov.uk
W Millington	Wheaton Aston	w.millington@wheatonastonparishcouncil.gov.uk
R Nelson	Wheaton Aston	r.nelson@wheatonastonparishcouncil.gov.uk
T Noblett (Chair)	Wheaton Aston	t.noblett@wheatonastonparishcouncil.gov.uk
V Renfrew	Lapley	v.renfrew@wheatonastonparishcouncil.gov.uk
M Smith	Wheaton Aston	m.smith@wheatonastonparishcouncil.gov.uk
S Whittingham	Wheaton Aston	s.whittingham@wheatonastonparishcouncil.gov.uk
S Whittingham	Wheaton Aston	sue.whittingham@wheatonastonparishcouncil.gov.uk

OFFICE

A Watson	Parish Council Manager	office@wheatonastonparishcouncil.gov.uk
07495789051		
K Daker	Assistant Clerk	assistant@wheatonastonparishcouncil.gov.uk
Office Address	Office F7, South Staffordshire Business Hub, Wolverhampton Road, WV8 1PE (Currently Closed)	
Telephone	01902 842556	
Website	www.wheatonastonparishcouncil.co.uk Also find us on Facebook	

Other Key Contacts

County Councillor Mark Sutton	01902 851682	mark.sutton@staffordshire.gov.uk
District Councillor Brian Cox	01785 840482	b.cox@sstaffs.gov.uk
District Councillor Ve Jackson	01785 840256	v.jackson@sstaffs.gov.uk
Staffordshire County Council	0300 111 8000	www.staffordshire.gov.uk
South Staffordshire District Council	01902 696000	www.sstaffs.gov.uk
Police	101 (non-urgent) 999 (emergency)	www.staffordshirepolice.org.uk
Crimestoppers	0800 555 111	www.crimestoppers-uk.org
Highways	0300 111 8000	highways@staffordshire.gov.uk

2020 Parish Council Meetings

These have been cancelled until further notice for due to the Covid-19 outbreak.