



Lapley, Stretton  
& Wheaton Aston  
Parish Council

# NEWS & VIEWS

Issue 1 / 2021

**Christmas Light Switch on** – We know it seems a bit early to start thinking about Christmas however, as last year's Christmas light switch on was cancelled, the Parish Council would like to hear from you on how we can make this year's Light Switch on better. Please email the Office manager at [office@wheatonastonparishcouncil.gov.uk](mailto:office@wheatonastonparishcouncil.gov.uk)



**Suggestion post boxes** – These have been installed in the villages and are checked regularly as we know that not everyone has online access and although the easiest and quickest way to get in touch with us is by email, not everyone can or wants to and may prefer paper and pen. So If you have a suggestion for the parish, please let us know!



**The Annual Parish Meeting** – This meeting is an opportunity to celebrate what's been happening in the Parish over the last year. We invite all community groups who have received funding from us to present a report on what that funding helped achieve.

This year (for the first year) we will also be holding a community meeting within our October meeting for residents to bring forward ideas of what they would like to see achieved in the Parish over the next year.

It hasn't been confirmed by the Government if this meeting will be held virtually via zoom or a physical meeting. Please see our website for more details nearer the time.



Lapley, Stretton  
& Wheaton Aston  
Parish Council

*Let's get  
together!*

## ANNUAL PARISH MEETING

---

27TH MAY 2021 6:00PM

---



*What  
have we  
done?*

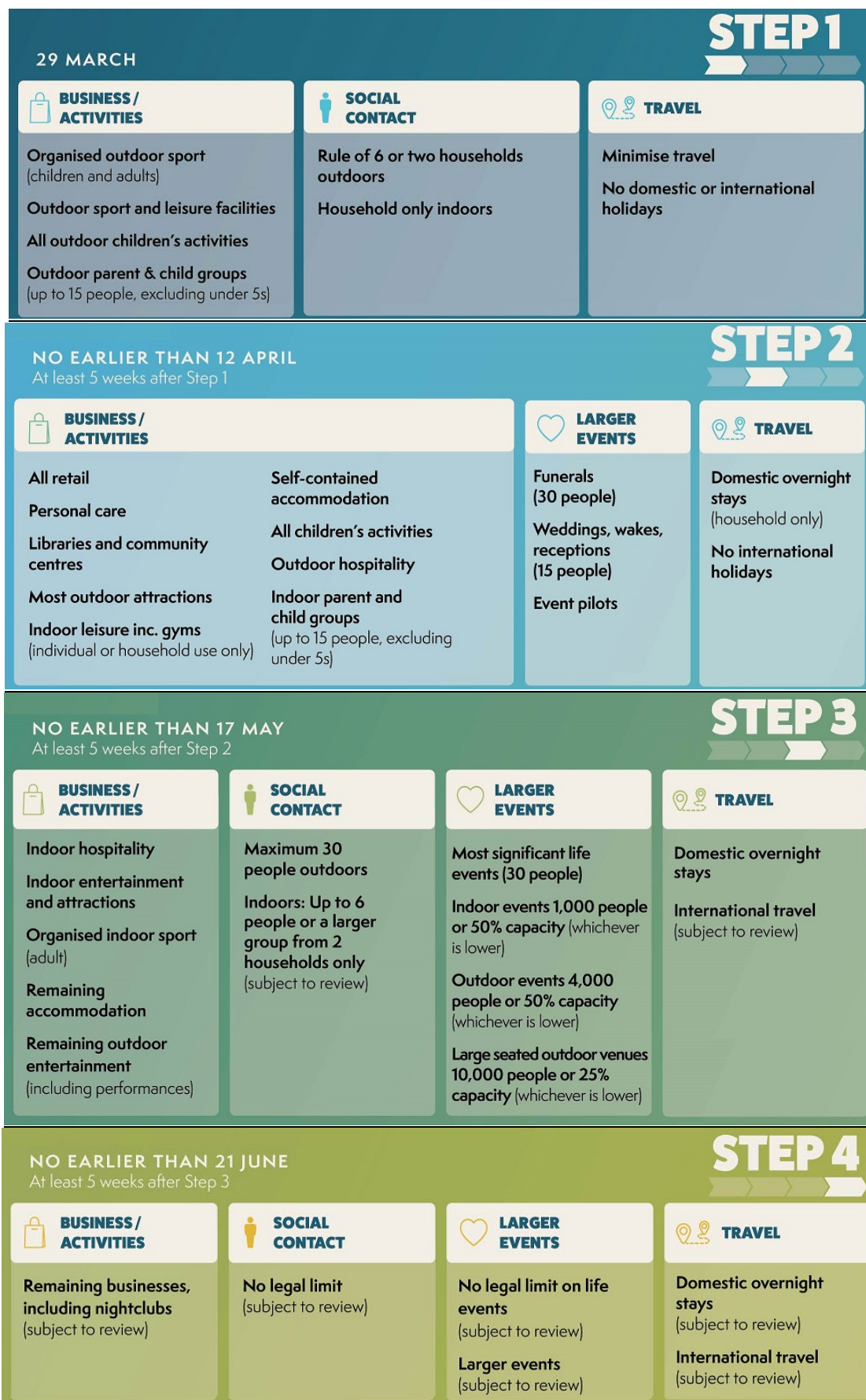
*What  
should we  
do?*

*How did  
we do?*

*How can  
we help?*

email:[office@wheatonastonparishcouncil.gov.uk](mailto:office@wheatonastonparishcouncil.gov.uk)  
or put a note in our suggestion box in your village.

**Covid-19** – The Government has issued its roadmap out of lockdown. This is subject to review and dependent on Covid-19 infection numbers so please continue to follow the Government rules and check on [www.gov.uk](http://www.gov.uk) for updates.







## #TALK SUICIDE

Staffordshire County Council are raising awareness around suicide. Information and details on how to access training can be found on the website [www.staffordshire.gov.uk/Care-for-all-ages/Publichealth/Talking-about-suicide.aspx](http://www.staffordshire.gov.uk/Care-for-all-ages/Publichealth/Talking-about-suicide.aspx)

Talking about suicide - There's no easy way to ask someone if they're suicidal. But skirting around the issue won't help. The best approach is to be sensitive yet direct by asking questions, such as:

- are you thinking about hurting yourself?
- are you thinking about dying?
- are you thinking about suicide?

Remember, mentioning suicide to someone who's already thinking about it will not encourage them to go through with it. If you see someone you think might need help, trust your instincts and start a conversation. You could help save a life. Don't be put off approaching someone who you think is suicidal because you don't know what to say. One of the best things you can do is to simply encourage them to talk about their feelings.

Listen - Talking about someone's problems is not always easy and it may be tempting to try to offer a solution. But often the most important thing you can do to help is listen to what they have to say. It's also important that the person who needs help doesn't feel judged. For instance, comments such as "Don't you think you might be drinking too much?" can sometimes make the situation worse. Reassurance, respect and support are what can help during these difficult periods.

Ask questions – This can be a useful way of letting a person remain in control while allowing them to talk about how they're feeling. Try not to influence what the person says, but give them the opportunity to talk honestly and openly. Ask open-ended questions such as "Where did that happen?" and "How did that feel?", encouraging them to keep talking. Make sure you avoid statements that could possibly end the conversation, such as "I know how you feel" and "Try not to worry about it".

Getting professional help - Talking to someone about their feelings is invaluable in helping them feel safe and secure, however, these feelings may not last. It will probably require long term support to help someone overcome their suicidal thoughts. This will most likely be easier with professional help, for example, speaking with a GP. Not only can a professional deal with the underlying issues behind someone's suicidal thoughts, they can also offer advice and support for you. If there is an immediate danger, make sure they are not left on their own.

The above advice is taken from the Zero Suicide Alliance [www.zerosuicidealliance.com/](http://www.zerosuicidealliance.com/)

**Dog fouling issues** - Once again we are getting more and more reports of dog fouling on the pavements, and open spaces. Not picking up after your furry loved one is not acceptable. There is a regular offender at Marston Field (same spot!) We are working through CCTV footage to identify the culprit. We encourage residents to report anyone witnessed not cleaning up to the enforcement team at South Staffordshire Council. Tel: 01902 696000 email: [EnviroCrime@sstaffs.gov.uk](mailto:EnviroCrime@sstaffs.gov.uk).

Dog fouling is not only deeply unpleasant, it is dangerous. Whilst rare, contact with dog excrement can cause toxocariasis – a nasty infection that can lead to dizziness, nausea, asthma and even blindness or seizures. While most dog owners are caring, responsible individuals, there are still some people who do not clean up after their pets. Anyone who fails to clear up after their dog can be issued with a Fixed Penalty Notice of up to £100. If the case goes to court this could cost the owner or person in charge of the animal up to £1,000.

**Brewood Library** – Find out the latest news at: [www.staffordshire.gov.uk/Libraries/Coronavirus-update-for-libraries.aspx](http://www.staffordshire.gov.uk/Libraries/Coronavirus-update-for-libraries.aspx)

**Broadholes update** - In October we wrote to residents in the near vicinity to Broadholes Lane play area advising that we are considering how best to use this area. Currently, the area is very underused and the PC would like this area to be turned in to a well-used area of community benefit. Allotments and an outdoor gym have so far been suggested. At the moment we cannot progress this project for further consultation as we are waiting on some legal clarification. We have requested an appointment with a planning officer from South Staffordshire Council to come and advise. Once we are in a position to move forward we will begin to consult with the wider community. If you do have any suggestions please pop them in one of the suggestion boxes or email [office@wheatonastonparishcouncil.gov.uk](mailto:office@wheatonastonparishcouncil.gov.uk)



We all need to do our bit to help climate change. There are lots of things you can do to help. Here are a few ideas: -

**Grow plants wherever you can** as they provide shelter for a variety of insects. If you don't have much space use baskets, containers, window boxes and don't forget to grow upwards with climbers.

**Feed the birds** by hanging a bird feeder or a fat ball in winter when snow makes it difficult for birds to forage for food. High calorie feed such as peanuts, suet and sunflower hearts is especially important at these times. Don't forget to put some food on the ground for those birds who cannot use the feeders.

**Layer bulbs with different flowering times** to create food for the bees for longer.

**Provide homes for wildlife** by erect a bird box or a bug hotel

**Create wildlife highways** to allow wildlife to travel between habitats. One idea is to replace a fence with a hedge or install hedgehog friendly gravel boards.



**Add Water** – containers ponds and birdbaths are a great way of bringing wildlife into your garden.

**Plant a tree or a shrub** – Trees help absorb CO<sub>2</sub> and pollution, mitigate against flooding and provide more habitat and food for wildlife. Always make sure you plant native species. The Woodland Trust has a list on their website (see link below)

[www.woodlandtrust.org.uk/trees-woods-and-wildlife/british-trees/native-trees/](http://www.woodlandtrust.org.uk/trees-woods-and-wildlife/british-trees/native-trees/)

If you don't have room in your garden for a tree, plant a variety of shrubs such as hazel and guelder rose.

**Compost** - Making and using your own compost will naturally enrich your soil and will provide habitat for a variety of wildlife such as worms, woodlice, frogs and slow worms. To avoid attracting rats, only add raw, not cooked food.

**Plant flowers.** They are beautiful, bring colour and scent into your garden and provide food for insects. Try to grow as many varieties as possible to ensure blossom from spring through to autumn and try to source native species if you can.



**Let the grass and the weeds grow** – A small patch of long grass and weeds such as nettles, daisies and buttercups will provide shelter and food for a range of species.



**Trees for Climate** – A Government fund for England's 10 community forests to plant trees for carbon capture has been launched. As part of the scheme Forest of Mercia CIC will be planting new woodlands across South Staffordshire and the Black County and are looking for local private and public landowners who would like to plant several hundred or more trees on their land.

If you would like your land to be considered, please contact them. Tel: 01922 417770. Email [trees@forestofmerciam.com](mailto:trees@forestofmerciam.com)





## Services

**Church Services** – These are back in Church on Easter Sunday, 4<sup>th</sup> April, followed by fortnightly worship until restrictions are fully eased. Please remember to wear masks and remain socially distanced both in church and outside.

### Sunday 4<sup>th</sup> April: Easter Sunday

|       |                  |                                |
|-------|------------------|--------------------------------|
| 9.00  | Easter Communion | All Saints, Lapley             |
| 9.30  | Easter Communion | St Andrew, Weston under Lizard |
| 10.30 | Easter Communion | St Mary, Wheaton Aston         |
| 11.00 | Easter Communion | St Mary, Blymhill              |

### Sunday 11<sup>th</sup> April: Easter 1

|       |                 |                        |
|-------|-----------------|------------------------|
| 10.30 | Service for All | St Mary, Wheaton Aston |
| 10.30 | Holy Communion  | St Mary, Blymhill      |

### Sunday 18<sup>th</sup> April: Easter 2

|       |                |                                 |
|-------|----------------|---------------------------------|
| 9.00  | Holy Communion | All Saints, Lapley              |
| 10.30 | Holy Communion | St Andrews, Weston under Lizard |

### Sunday 25<sup>th</sup> April: Easter 3

|       |                 |                        |
|-------|-----------------|------------------------|
| 10.30 | Holy Communion  | St Mary, Wheaton Aston |
| 10.30 | Service for All | St Mary, Blymhill      |

**Virtual Services and Events** - All are welcome. Please ask for the joining instructions for Zoom. Facebook Live services stream through the Watershed Benefice Page on Facebook. Please ask if you are unsure how to access anything

### **Weekly**

|     |         |  |          |
|-----|---------|--|----------|
| Sun | 7.00am  | Holy Communion (except 11 <sup>th</sup> April)         | Facebook |
| M-F | 9.00am  | Morning Prayer   | Facebook |
| Tue | 9.30am  | Prayer Group   | Zoom     |
| Wed | 11.00am | Homeworker Coffee Break (except 7 <sup>th</sup> April) | Zoom     |
| Thu | 12.30pm | Prayers for the Nation                                 | Zoom     |

### **Monthly/One-off**

Thu 1<sup>st</sup> 2.00pm, Holy Week Communion - Wheaton Aston Court  
 Thu 1<sup>st</sup> 7.30pm, Maundy Thursday Service - Facebook  
 Fri 2<sup>nd</sup> 11.00am, Messy Church for Easter - Facebook  
 Fri 2<sup>nd</sup> 2.00pm, The Last Hour at the Cross - Facebook  
 Sat 3<sup>rd</sup> 11.00am, SACRED Bible Study - Zoom  
 Sat 3<sup>rd</sup> 8.00pm, Holy Saturday Vigil\* - Facebook  
 Sat 10<sup>th</sup> 4.00pm, Church Family Quiz - Zoom  
 Sun 18<sup>th</sup> 6.30pm, A Quiet Space - Facebook  
 Mon 19<sup>th</sup> 7.00pm, Dying Matters - Zoom  
 Wed 21<sup>st</sup> 7.30pm, Healing & Wholeness - Facebook  
 Thu 22<sup>nd</sup> 2.00pm, www.café - Zoom  
 Sun 25<sup>th</sup> 4.00pm, Songs of Praise - Facebook  
 Sun 25<sup>th</sup> 5.00pm, Post Service Coffee - Zoom  
 Wed 28<sup>th</sup> 9.30am, Monthly Bible Study - Zoom

\*Short reflections for Easter Eve at 8.00, 9.00, 10.00 and 11

**Rogue Traders** - The Police have informed the Parish Council that Rogue Traders have been in the Parish targeting elderly vulnerable persons, saying that their homes need work doing to them when they don't. Once the homeowner agrees to work being done, the price quoted increases several times. Police advise never to buy from cold callers as you are never quite sure they are who they say they are. We have provided you with this "No Cold Callers" sign below to cut out and put on your front door / porch to deter cold callers.

# WE DO NOT BUY FROM OR SELL TO CALLERS AT THE DOOR



## WE DO NOT REQUIRE:

Home improvements, financial advice, security recommendations, market research etc.

STAFFORDSHIRE  
POLICE

101

IN AN  
EMERGENCY  
ALWAYS  
CALL 999

**Under the Consumer Protection from Unfair Trading Regulations 2008, it can be an offence to refuse to leave a property when asked to do so.**

**Citizens Advice** – Contact Staffordshire South West Citizens Advice Bureau on 03444 111 444

**Voluntary Car Scheme** – The car scheme is now closed due to the Covid-19 outbreak.

**Support Staffordshire** – offers charities, voluntary and community groups in Staffordshire support, advice and training on how to set up and run your group, support for volunteers and discounted services. Tel 0300 777 1207 or email to [info@supportstaffordshire.org.uk](mailto:info@supportstaffordshire.org.uk)

**Damage to the Highway** – Although Staffordshire County Council office are closed to the public, you can report potholes/damaged pavements / problems with lighting columns and road signs on the Staffordshire County Council website, or download the “My Staffs” app, which let you send in photos and locations straight from your phone. If you do go out to take photos, please make sure this is a part of your daily exercise as allowed by Central Government and ensure you keep 2-meter distance from others outside of your household member.

**If you see it, report it!** - If you see a crime in progress, call 999 immediately. Please report non-urgent crime including graffiti, anti-social behaviour, and damage by calling the police on 101. Officers can only investigate matters which are reported.

#### Staffordshire Police Smart Alert



**Crime Prevention / Cybercrime** - There is a wealth of advice on the Staffordshire Police website. For more information visit: [www.staffordshire.police.uk/crimeprevention](http://www.staffordshire.police.uk/crimeprevention)

[www.staffordshire.police.uk/cybercrime](http://www.staffordshire.police.uk/cybercrime)

**CrimeStoppers** - Give information anonymously. <https://crimestoppers-uk.org/> or Tel: 0800 555 111

**South Staffordshire District Council** – The Council Offices remain closed to the public and residents should use alternative ways of contacting the Council rather than visiting in person. 'My Account', the Council's online facility, gives residents online access to council services 24/7. You can register or access it at: [www.sstaffs.gov.uk/myaccount](http://www.sstaffs.gov.uk/myaccount). Email: [info@sstaffs.gov.uk](mailto:info@sstaffs.gov.uk) Tel: 01902 696000

**South Staffs Community Lottery** – You could win up to £25,000, and help support local good causes by taking part in the South Staffordshire Community Lottery. This weekly online lottery takes place every Saturday night at 8pm. To purchase tickets Tel: 01902 213777 or [www.southstaffslottery.co.uk](http://www.southstaffslottery.co.uk)

**South Staffs Leisure Centres (Penkridge, Codsall, Wombourne & Cheslyn Hay)** – Get the latest information about the leisure centres at [www.sstaffs.gov.uk/leisure](http://www.sstaffs.gov.uk/leisure)



**Garden Waste Collection Service** – You can still sign up for the service:

- £43.60 per green bin for the duration of the scheme year
- This scheme year runs until the end of June 2021
- Permit sticker will be posted to you within 14 days of sign up
- Sign up at [www.sstaffs.gov.uk/gardenwaste](http://www.sstaffs.gov.uk/gardenwaste)

**South Staffordshire Work Clubs** – If you need help getting work Tel: Val Chapman 07718 911367 or email: [val.chapman3@btinternet.com](mailto:val.chapman3@btinternet.com)

**Staffordshire Warm Homes Fund** - South Staffordshire Council is urging residents to register for the Staffordshire Warm Homes Fund that could save them money on their heating bills. The funding scheme is aimed at residents who are struggling with their heating bills and using expensive electric heaters and open fires. For more information visit [www.staffordshirewarmerhomes.co.uk](http://www.staffordshirewarmerhomes.co.uk).

## Your Parish Council

| <u>COUNCILLOR</u> | <u>WARD</u>   | <u>Email</u>   |
|-------------------|---------------|--|
| A Anderson        | Stretton      | <a href="mailto:a.anderson@wheatonastonparishcouncil.gov.uk">a.anderson@wheatonastonparishcouncil.gov.uk</a>           |
| E Dadd            | Stretton      | <a href="mailto:e.dadd@wheatonastonparishcouncil.gov.uk">e.dadd@wheatonastonparishcouncil.gov.uk</a>                   |
| M Griffiths       | Lapley        | <a href="mailto:m.griffiths@wheatonastonparishcouncil.gov.uk">m.griffiths@wheatonastonparishcouncil.gov.uk</a>         |
| W Millington      | Wheaton Aston | <a href="mailto:w.millington@wheatonastonparishcouncil.gov.uk">w.millington@wheatonastonparishcouncil.gov.uk</a>       |
| R Nelson          | Wheaton Aston | <a href="mailto:r.nelson@wheatonastonparishcouncil.gov.uk">r.nelson@wheatonastonparishcouncil.gov.uk</a>               |
| T Noblett (Chair) | Wheaton Aston | <a href="mailto:t.noblett@wheatonastonparishcouncil.gov.uk">t.noblett@wheatonastonparishcouncil.gov.uk</a>             |
| V Renfrew         | Lapley        | <a href="mailto:v.renfrew@wheatonastonparishcouncil.gov.uk">v.renfrew@wheatonastonparishcouncil.gov.uk</a>             |
| M Smith           | Wheaton Aston | <a href="mailto:m.smith@wheatonastonparishcouncil.gov.uk">m.smith@wheatonastonparishcouncil.gov.uk</a>                 |
| S Whittingham     | Wheaton Aston | <a href="mailto:s.whittingham@wheatonastonparishcouncil.gov.uk">s.whittingham@wheatonastonparishcouncil.gov.uk</a>     |
| S Whittingham     | Wheaton Aston | <a href="mailto:sue.whittingham@wheatonastonparishcouncil.gov.uk">sue.whittingham@wheatonastonparishcouncil.gov.uk</a> |

### OFFICE

|          |                        |  |
|----------|------------------------|--|
| A Watson | Parish Council Manager | <a href="mailto:office@wheatonastonparishcouncil.gov.uk">office@wheatonastonparishcouncil.gov.uk</a>       |
| K Daker  | Assistant Clerk        | <a href="mailto:assistant@wheatonastonparishcouncil.gov.uk">assistant@wheatonastonparishcouncil.gov.uk</a> |

Office Address      Office F7, South Staffordshire Business Hub, Wolverhampton Rd, WV8 1PE (Currently Closed)  
Telephone            07495 789051 (Parish Council Manager)/ 07398 743554 (Assistant Clerk)  
Website              [www.wheatonastonparishcouncil.co.uk](http://www.wheatonastonparishcouncil.co.uk) Also find us on Facebook

### **Other Key Contacts**

|                                      |                                     |  |
|--------------------------------------|-------------------------------------|--|
| County Cllr Mark Sutton              | 01902 851682                        | <a href="mailto:mark.sutton@staffordshire.gov.uk">mark.sutton@staffordshire.gov.uk</a>   |
| District Cllr Brian Cox              | 01785 840482                        | <a href="mailto:b.cox@sstaffs.gov.uk">b.cox@sstaffs.gov.uk</a>                           |
| District Cllr Ve Jackson             | 01785 840256                        | <a href="mailto:v.jackson@sstaffs.gov.uk">v.jackson@sstaffs.gov.uk</a>                   |
| Staffordshire County Council         | 0300 111 8000                       | <a href="http://www.staffordshire.gov.uk">www.staffordshire.gov.uk</a>                   |
| South Staffordshire District Council | 01902 696000                        | <a href="http://www.sstaffs.gov.uk">www.sstaffs.gov.uk</a>                               |
| Police                               | 101 (non-urgent)<br>999 (emergency) | <a href="http://www.staffordshirepolice.org.uk">www.staffordshirepolice.org.uk</a>       |
| Crimestoppers                        | 0800 555 111                        | <a href="http://www.crimestoppers-uk.org">www.crimestoppers-uk.org</a>                   |
| Highways                             | 0300 111 8000                       | <a href="mailto:www.highways@staffordshire.gov.uk">www.highways@staffordshire.gov.uk</a> |

**2021 Parish Council Meetings** - 27th May, (Annual Parish Meeting of electors at 6:00pm, Annual Meeting of the Parish Council at 7:00pm), 15th July, 2nd Sept, 21st Oct, 9th Dec (Precept)

Lapley, Stretton & Wheaton Aston Parish Council would like to wish all residents..

A HAPPY  
EASTER





# **MAKE A CHANGE**



## **BECOME A PARISH COUNCILLOR**

**If you care about where you live  
and are passionate about your  
community, we need you!**

**For more details contact the Parish Manager:**

**Email: [office@wheatonastonparishcouncil.gov.uk](mailto:office@wheatonastonparishcouncil.gov.uk)**

**Tel: 07495 789051  
or visit**

**[www.wheatonastonparishcouncil.gov.uk](http://www.wheatonastonparishcouncil.gov.uk)  
[www.facebook.com/wastonparish/](https://www.facebook.com/wastonparish/)**