



Lapley, Stretton
& Wheaton Aston
Parish Council

NEWS & VIEWS

Issue 3 / 2021

Local Plan Preferred Options Consultation

Sites have been allocated off Ivetsey Road (adjacent to the current development), Fentonhouse Lane and at Bridge Farm Consultation on South Staffs Council's Preferred Options stage of their Local Plan will run from 1st November until 5:00 pm on 13th December 2021.

Responses must be provided in writing, preferably electronically via the South Staffs council consultation portal that can be accessed at: <https://sstaffs.oc2.uk/login>. If you want to learn more about the local plan there are a few options:

FACE TO FACE MEETINGS - There will be face-to-face meetings available at Coven memorial hall on 18th November. You will need to be book an appointment via South Staffs Council, calling 01902 696000 customer services. The first appointment slot for each session will be 10.30am, with the final slot of the day 7.30pm.

CALLS WITH OFFICERS - In addition to the above virtual meetings and face-to-face appointments residents will be able to arrange telephone calls/virtual meetings with South Staffs Council officers throughout the 6-week consultation and a diary is being kept updated to enable this to happen.

Below are links to the Local Plan paperwork.

1. Final Preferred Options document and updated Preferred Options FAQs both now on this page:

<https://www.sstaffs.gov.uk/planning/preferred-options.cfm>

2. Local Plan Review Evidence Base page, which contains the topic papers and studies underpinning the Local Plan Review. (Please be aware that this is still being updated as we format the documents in readiness for the start of the consultation period.)

3. Details of Public Engagement including Online Q&A Sessions, In-Person Sessions (by appointment), one-to-one virtual sessions on Teams and telephone to Team Members, all on one page here:

<https://www.sstaffs.gov.uk/planning/local-plan-review-4.cfm>

4. Links to dedicated Local Plan Consultation Portal on Local Plan Review, Consultation, Policy Updates pages:

www.sstaffs.gov.uk/planning/local-plan-review-4.cfm

**WE ENCOURAGE YOU TO HAVE YOUR SAY FOR
THE FUTURE AND FURTHER DEVELOPMENT OF
OUR VILLAGE**

Christmas is back!

We look forward to welcoming you to our Christmas light Switch on event on **Saturday 20th November 4-6pm**. We have some new stalls joining us this year as well as the Salvation Army and the children of St Mary's First School. Whilst we aim to make this event as enjoyable as possible we also need to be safe so please be aware of any updates from the Government regarding Covid-19 and attending events. Please only attend if you are well, if you have any symptoms of Covid-19 please keep our community safe by staying home and seeking government and medical advice. This year we look forward to welcoming Wildwood Alpacas to the event. The alpacas live locally and are used to visitors popping to say hello so please pay them a visit, they will be located at The Cobbles. We also have some new stalls joining us this year as well as Dangerous Sheep Events who will be providing the stage. We hope to be able to provide entertainment but this is dependent on Covid bubbles within the school and Government restrictions.

On Stage event timetable:

4.00pm Event opens

4.05pm The Nativity Story performed by the Children of St Mary's

4.40pm A selection of Carols performed by The Salvation Army band

5.15pm Christmas songs performed by the children of St Mary's

5.50pm Lights Switch on

6pm Event closes

Sadly, the planted tree at Lapley Green died so we have installed a similar tube system as at Wheaton Aston to hold a 12ft Christmas tree. This will be installed and removed at the same time as Wheaton Aston each year.

LAPLEY STRETTON AND WHEATON
ASTON PARISH COUNCIL

WHEATON ASTON CHRISTMAS LIGHTS SWITCH ON 2021

20th November 4:00pm-6:00pm

Thank you for coming to the switch on event. The Parish Council hopes that you enjoy the evening and wishes you and your family a very merry Christmas and a happy and healthy New Year.

ON STAGE

- 4:00pm Welcome by Chairman and appearance by Father Christmas
- 4:05pm Children of St Marys First School accompanied by Rev'd Dale- The Nativity Story
- 4.40pm Carols with The Salvation Army Band
- 5.15pm St. Mary's First School Choir
- 5:45pm Light Switch on by Parish Chairman, Cllr Winnie Millington, and Father Christmas

VILLAGE SQUARE

Santa's grotto
Mulled wine
Mince pies
Children's rides
Burgers
Hot dogs
Drinks
Sweets
Games
Tombola
Lucky dip
Reindeer Food
Gifts
Body Shop Products
Felt gifts
Wildwood Alpacas

A St. John Ambulance First Aid point is provided in the small room at the Village Hall. If you require first Aid please tell the nearest steward or go straight to the small room via the side entrance & fire door.

A Lost Child Point is provided next to the stage. In the event of an emergency, please listen to announcements over the PA system

VILLAGE HALL

Refreshments
Tombola
Gifts
New Toys
Crafts

CHURCH

Chocolate Tombola
Refreshments
Crafts
Books
Gifts
Decorations
Pre-loved toys

Lapley, Stretton and Wheaton Aston Parish Council would like to thank Cannock Citadel Band of the Salvation Army, St. Mary's Church, all who provide stalls and entertainment, George Dobson, AFEB Ltd, South Staffordshire Council, St. Mary's First School, Staffordshire Highways, Turnock Limited, Dangerous Sheep Events Staffordshire Police, Brewood Fire Station, Wildwood alpacas, St John Ambulance and all those affected by the road closure for their support and cooperation



Wildwood Alpacas



Crime update

South Staffordshire Community Partnership, which includes South Staffordshire Council, Staffordshire Police and partners, is working to **reduce crime and anti-social behaviour** and to reassure local residents that South Staffordshire is a safe place to live, work and visit.

The year to date comparison on 30 September 2021 is that:

- Crime in South Staffs is down by 8%
- Burglary Residential is down by 36%
- Burglary Business is down by 23%
- Theft of Motor Vehicle is down by 26%
- Theft from Motor Vehicle is down by 13%
- Anti-social behaviour is down by 11%

Covid-19 Pandemic

Covid-19 hasn't gone away, please continue to follow government advice and stay safe.

www.gov.uk/coronavirus

Update from Brewood Surgery and PPG

www.brewoodsurgery.nhs.uk. There's a wealth of information freely available on the website concerning minor ailments, health information and a search facility on symptoms. You can also join Patient Access, which will enable you to place repeat prescriptions and choose to which pharmacy you want that prescription sent. You can also make a doctor's appointment (but not an appointment for nurse or blood tests), see what meds you have had in the past and access your medical records.

To access this service, you need to take photographic identification to reception, and you will be given some codes which you use to set up your account. It is easier than you may think!

If you have a problem we would like to resolve the concerns you have the best we can, please contact the surgery. If you feel you wish to make a formal complaint then please formally write to the surgery or email to brewoodsurgery@nhs.net and it will be forwarded to the most appropriate member of staff.

See the right person for the job! Services available from your Surgery. Seeing practitioners specialising in certain fields gives you more expert advice on your condition.

Sometimes, it is not necessary to see or talk to a doctor. Services are available from other specialists operating out of the practice. Here are a few examples: -

- Clinical Pharmacists, who can review medication.
- Cervical smears conducted by nurses
- Advanced Clinical Practitioners
- Nurses
- Musculoskeletal Practitioner,
- Mental Health Practitioner
- Community Link Advisor/Social Prescriber.

Broadholes Lane Play Area

We are still looking at options for the use of Broadholes Lane and intend to consult wider once we have some advice on if the area could be used as allotments. A letter will be through your door in the near future.

Lapley Green

Early 2022 residents in Lapley will see some work being undertaken at the green as Open Reach move the BT Lines away from the trees. The lines were becoming problematic and would have resulted in pruning the trees to give clearance. Whilst it would have been preferred to move the lines off the green completely this hasn't been possible due to an underground cable system.



World temperatures are rising

If we don't make changes, humans and nature will experience catastrophic warming, with worsening droughts, greater sea level rise and mass extinction of species.

What is climate change? – Climate is the average weather in a place over many years. Climate change is a shift in those average conditions. The rapid climate change we are now seeing is caused by the use of oil, gas and coal. When fossil fuels are burnt they release gases into the atmosphere and could cause the planet's temperature to rise. The world is now about 1.2C warmer than it was in the 19th Century - and the amount of CO₂ in the atmosphere has risen by 50%.

Scientists have advised that the rise in temperature must slow down if we want to avoid the worst consequences of climate change. Scientists believe at least 550 species could be lost this century if action is not taken. LSWA PC has had a climate and biodiversity policy in place for a few years and intend to carry on further work alongside South Staffordshire Council following their climate emergency declaration.



New Car Park Planters

Many thanks to our talented Village Orderly for creating these lovely new planters on the car park

ELECTORAL REVIEW OF SOUTH STAFFORDSHIRE DISTRICT COUNCIL - DRAFT RECOMMENDATIONS:

The Local Government Boundary Commission for England has published proposals for new electoral arrangements for South Staffordshire. A summary is shown below. The electoral arrangements (parish wards and number of councillors per ward) for your parish council will change because of the proposals. It is proposed that 42 councillors should be elected to South Staffordshire in future. Also proposed are new ward boundaries across the authority.

A public consultation on the proposals will run from 2 November 2021 to 10 January 2022. Once the commission have considered all responses to the consultation, they aim to publish final recommendations in March 2022. The commission will then lay a draft order in both houses of Parliament. Subject to parliamentary scrutiny, the new electoral arrangements are scheduled to come into effect at the authority's elections in 2023.

The commission considered all representations received from local people and organisations during the initial consultation when drawing up the proposals. They have sought to balance statutory criteria we must follow when drawing up these proposals, and seek to:

- Make sure that, within an authority, each councillor represents a similar number of electors
- Create boundaries that are appropriate, and reflect community ties and identities
- Deliver reviews informed by local needs, views and circumstances

The
Local Government
Boundary Commission
for England

The
Local Government
Boundary Commission
for England

November 2021

Summary Report

The full report and detailed maps:

www.consultation.lgbce.org.uk

www.lgbce.org.uk

Have your say

We are now consulting local people on a new pattern of wards for South Staffordshire District Council. We have an open mind about our final recommendations, and we will consider every piece of evidence we receive from local groups and people, regardless of whom it is from or whether it relates to the whole council area or just a part of it.

If you agree with our recommendations, please let us know. If you don't think our recommendations are right for South Staffordshire we want to hear alternative proposals for a different pattern of wards.

South Staffordshire District Council

Draft Recommendations on the new electoral arrangements

We aim to propose a pattern of wards for South Staffordshire District Council which delivers:

- **Electoral equality:** each councillor represents a similar number of electors.
- **Community identity:** reflects the identity and interests of local communities.
- **Effective and convenient local government:** helping your council discharge its responsibilities effectively.

A good pattern of wards should:

- Provide good electoral equality, with each councillor representing, as closely as possible, the same number of electors.
- Reflect community interests and identities and include evidence of community links.
- Be based on strong, easily identifiable boundaries.
- Help the council deliver effective and convenient local government.

Electoral equality

- Does your proposal mean that councillors would represent roughly the same number of electors as elsewhere in the council area?

Community identity

- **Transport links:** are there good links across your proposed ward? Is there any form of public transport?
- **Community groups:** is there a parish council, residents association or another group that represents the area?
- **Facilities:** does your pattern of wards reflect where local people go for shops, medical services, leisure facilities etc?

- **Interests:** what issues bind the community together or separate it from other parts of your area?
- **Identifiable boundaries:** are there natural or constructed features which make strong boundaries for your proposals?

Effective local government

- Are any of the proposed wards too large or small to be represented effectively?
- Are the proposed names of the wards appropriate?

Useful tips

- Our website has a special consultation area where you can explore the maps. You can find it at consultation.lgbce.org.uk.
- We publish all submissions we receive on our website. Go to: www.lgbce.org.uk.

Who we are

- The Local Government Boundary Commission for England is an independent body set up by Parliament.
- We are not part of government or any political party.
- We are accountable to Parliament through a committee of MPs chaired by the Speaker of the House of Commons.
- Our main role is to carry out electoral reviews of local authorities throughout England.

Electoral review

- An electoral review examines and proposes new electoral arrangements for a local authority, including:
- The total number of councillors representing the council's electors ('council size').
 - The names, number and boundaries of wards or electoral divisions.
 - The number of councillors for each ward or division.



Why South Staffordshire?

Periodic

- The Commission has a legal duty to carry out an electoral review of each council in England 'from time to time'.
- South Staffordshire District Council has not been reviewed since 2000 and the Commission has therefore decided that it should review South Staffordshire in advance of the elections in 2023.

Our proposals

- We propose that the council should have 42 councillors in future, representing 6 three-councillor wards, 10 two-councillor wards and 4 one-councillor wards across the council area.

You have until 10 January 2022 to have your say on the recommendations

Write to:
Review Officer (South Staffordshire)
LGBCE
PO Box 133
Blyth
NE24 9FE

Our consultation area:
consultation.lgbce.org.uk
Email:
reviews@lgbce.org.uk
Twitter:
@LGBCE

The commission are now inviting comments on the proposals before finalising the new electoral arrangements in each area. They will consider every response received during the consultation period and will weigh each response against the criteria above.

If you would like to explore the draft recommendations, you can do so by visiting the consultation website at <https://consultation.lgbce.org.uk/node/27826>. Interactive consultation pages give access to the full recommendations and allow people to explore maps of the proposals in greater detail and make comments. Comments are also accepted:

by email: reviews@lgbce.org.uk

by post: The Review Officer for South Staffordshire, LGBCE, PO Box 133, Blyth, NE24 9FE

The Commission’s main website contains further information about the electoral review and our work: www.lgbce.org.uk

Summary of our recommendations

Our draft recommendations propose that South Staffordshire District Council should have 42 councillors, a decrease of seven from the existing arrangements.

Those councillors should represent 6 three-councillor wards, 10 two-councillor wards and 4 one-councillor wards across the council area.

The boundaries of three wards (Essington, Himley & Swindon and Huntington & Hatherton) will stay the same; all others should change.

Before drawing up the draft recommendations, the Commission carried out a public consultation inviting proposals for a new pattern of wards for South Staffordshire.

We have considered all of the submissions we received during that phase of consultation. The boundaries of most wards should change.

An outline of the proposals is shown in the map to the right. A detailed report on the recommendations and interactive mapping is available on our website at: www.lgbce.org.uk.

We welcome comments on our draft recommendations, whether you support the proposals or wish to put forward alternative arrangements.

Have your say at consultation.lgbce.org.uk:

- view the map of our recommendations down to street level.
- zoom into the areas that interest you most.
- find more guidance on how to have your say.
- read the full report of our recommendations.
- send us your views directly.

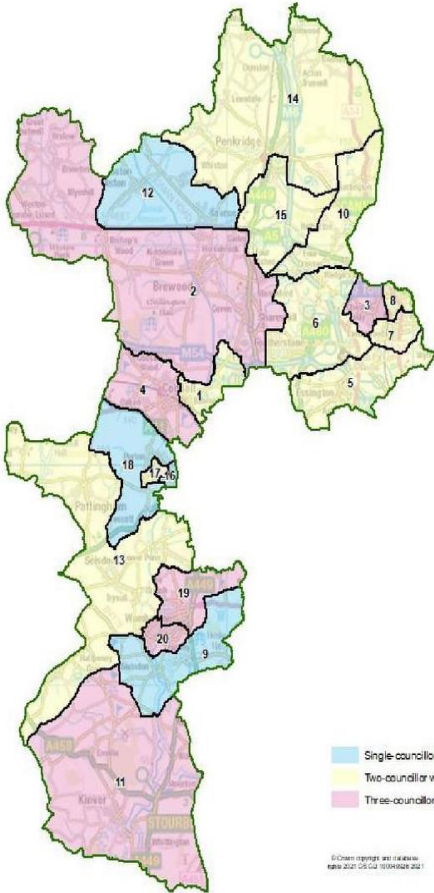
Stage of Review	Description
25 May 2021 - 2 August 2021	Public consultation on warding arrangements
2 November 2021 - 10 January 2022	Public consultation on draft recommendations
29 March 2022	Publication of final recommendations
May 2023	Subject to parliamentary approval - implementation of new arrangements at local elections

Overview of draft recommendations for South Staffordshire District Council

View this map online: consultation.lgbce.org.uk

Follow the review on Twitter: [@LGBCE](https://twitter.com/LGBCE)

If you are viewing this page online, click on the map to go straight to our interactive consultation area.



Ward Name	
1	Bilbrook
2	Blymhill & Brewwood
3	Cheslyn Hay Village
4	Codsall
5	Essington
6	Featherstone, Shreshill & Saredon
7	Great Wyrley Landywood
8	Great Wyrley Town
9	Himley & Swindon
10	Huntington & Hatherton
11	Kinver & Enville
12	Lapley, Stretton & Wheaton Aston
13	Pattingham, Trysull, Bobbington & Lower Penn
14	Penkridge North & Acton Trussell
15	Penkridge South & Gailey
16	Perton East
17	Perton Lakeside
18	Perton Wrottesley
19	Wombourne North
20	Wombourne South



Services

News from All Saints and St Mary's Churches

Advent and Christmas blessings to you all! Here is what our churches in Lapley and Wheaton Aston will be offering this Christmas time (although we ask, please, that you check with us nearer the time, as things may change at short notice). We respectfully ask that you wear a mask in busy services where distancing is difficult. Everyone is welcome to any of our services during the festive season - and throughout the year.

December 2021

Wednesday 1st: Our Posada begins its annual voyage around the villages. Please see the flyers in school or online and let Rev Rachel know by 22nd November if you wish to take part.

Saturday 4th @ 10.00am (St Mary's) Messy Church for Christmas. Craft, Worship and Food for Christmas. Children must be accompanied by an adult. Please ring to reserve your place.

Sunday 19th @ 10.30am (St Mary's) Christmas Toy Service. We welcome your donations of unwrapped new toys for the Salvation Army at this service.

Sunday 19th @ 6.15pm (Zion Chapel) Service of Carols and Readings Old and New, followed by seasonal refreshments

Sunday 19th @ 6.30pm (All Saints) Carols by Candlelight

Tuesday 21st @ 7.30pm (St Mary's) Blue Christmas *A quiet reflective service for those who find the busyness of Christmas tough*

Friday 24th Christmas Eve @ 3pm (St Mary's) Christingle

Friday 24th Christmas Eve @ 6pm (St Mary's) Carols on the Green

Friday 24th Christmas Eve @ 11.30pm (All Saints) Midnight Mass
(if you would prefer Bethlehem Midnight @ 9.30pm, you are welcome to join the service at St Andrew's, Weston under Lizard)

Saturday 25th Christmas Day @ 10.00am (St Mary's) All Age Christmas Communion

Saturday 25th Christmas Day @ 10.30am (Zion Chapel) Service of Holy Communion

Sunday 26th Boxing Day @ 10.30am (Facebook) Holy Communion

Sunday 2nd January @ 6.30pm (Facebook) A Quiet Service for the Turning of the Year

Saturday 8th January @ 10-3 (St Mary's) Epiphany Quiet Day

We regret that we will not be able to send our usual Christmas card /flyer to each home in the village this year - we simply do not have enough people who can deliver the envelopes door to door.

Please check out the Watershed Benefice Facebook page, our website www.watershedbenefice.org or the Church notice boards for more details. Alternatively, email revracheldale@gmail.com or phone The Rectory on 840395. If you wish to subscribe to our weekly email newsletter, please just ask.

Blessings, Rev'd Rachel Dale

Citizens Advice – Contact Staffordshire South West Citizens Advice Bureau on 03444 111 444

Support Staffordshire – offers charities, voluntary and community groups in Staffordshire support, advice and training on how to set up and run your group, support for volunteers and discounted services. Tel 0300 777 1207 or email to info@supportstaffordshire.org.uk

Damage to the Highway - You can report potholes/damaged pavements/problems with lighting columns and road signs on the Staffordshire County Council website, or download the "My Staffs" app, which lets you send in photos and locations straight from your phone.

If you see it, report it! - If you see a crime in progress, call 999 immediately. Please report non-urgent crime including graffiti, anti-social behaviour, and damage by calling the police on 101 or via the police website www.police.uk/pu/contact-the-police/report-a-crime-incident/ Officers can only investigate matters which are reported.

Staffordshire Police Smart Alert

Know what's going on in your area!

Register with Staffordshire Smart Alert to receive crime prevention advice and updates from your local policing team about crime and engagement events.

To sign up please visit our website: www.staffordshiresmartalert.co.uk



Crime Prevention / Cybercrime - There is a wealth of advice on the Staffordshire Police website. For more information visit: www.staffordshire.police.uk/crimeprevention
www.staffordshire.police.uk/cybercrime

CrimeStoppers - Give information anonymously. <https://crimestoppers-uk.org/> or Tel: 0800 555 111

Brewood Voluntary Car Scheme is Back!

Just call the office on 01902 851 786. We're open from 09.30 – 12.00 Monday to Friday. (There is an answerphone out of hours).

Giving as much notice as possible, tell us your name and address, telephone number, destination and the date and time of your appointment.

Covid precautions will apply. You will be advised of these when you make a booking.

As ever, we are looking for new drivers too!

If you would like more information, just call Sofena on the number given above.

South Staffordshire District Council – The Council Offices remain closed to the public and residents should use alternative ways of contacting the Council rather than visiting in person. 'My Account', the Council's online facility, gives residents online access to council services 24/7. You can register or access it at: www.sstaffs.gov.uk/myaccount. Email: info@sstaffs.gov.uk Tel: 01902 696000

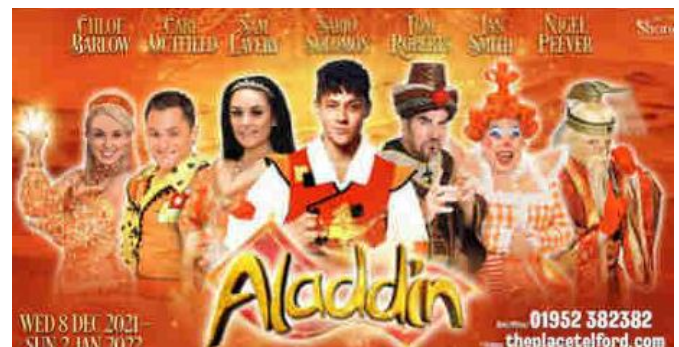
South Staffs Community Lottery – You could win up to £25,000, and help support local good causes by taking part in the South Staffordshire Community Lottery. This weekly online lottery takes place every Saturday night at 8pm. To purchase tickets Tel: 01902 213777 or www.southstaffslottery.co.uk

South Staffs Leisure Centres (Penkridge, Codsall, Wombourne & Cheslyn Hay) – Get the latest information about the leisure centres at www.sstaffs.gov.uk/leisure

South Staffordshire Work Clubs – Need help getting work? Find them on Facebook, Tel: 07718 911367, or email: staffsworkclubs@gmail.com

Staffordshire Warm Homes Fund - Residents are urged to register for the Staffordshire Warm Homes Fund that could save them money on their heating bills. For more information visit www.staffordshirewarmerhomes.co.uk.

The Place. Telford: Aladdin 8th Dec - 2nd Jan



Your Parish Council

<u>COUNCILLOR</u>	<u>WARD</u>	<u>EMAIL</u>
	A Anderson	Stretton
	a.anderson@wheatonastonparishcouncil.gov.uk	
E Dadd	Stretton	e.dadd@wheatonastonparishcouncil.gov.uk
M Griffiths	Lapley	m.griffiths@wheatonastonparishcouncil.gov.uk
J Hodgkiss	Wheaton Aston	j.hodgkiss@wheatonastonparishcouncil.gov.uk
W Millington (Chair)	Wheaton Aston	w.millington@wheatonastonparishcouncil.gov.uk
R Nelson	Wheaton Aston	r.nelson@wheatonastonparishcouncil.gov.uk
T Noblett	Wheaton Aston	t.noblett@wheatonastonparishcouncil.gov.uk
V Renfrew	Lapley	v.renfrew@wheatonastonparishcouncil.gov.uk
M Smith	Wheaton Aston	m.smith@wheatonastonparishcouncil.gov.uk
S Whittingham	Wheaton Aston	s.whittingham@wheatonastonparishcouncil.gov.uk
S Whittingham	Wheaton Aston	sue.whittingham@wheatonastonparishcouncil.gov.uk

OFFICE

A Watson	Parish Council Manager	office@wheatonastonparishcouncil.gov.uk
K Daker	Assistant Clerk	assistant@wheatonastonparishcouncil.gov.uk

Office Address Office FF028, South Staffordshire Business Hub, Wolverhampton Rd, WV8 1PE
Telephone 07495 789051 (Parish Council Manager)/ 07398 743554 (Assistant Clerk)
Website www.wheatonastonparishcouncil.co.uk Also find us on Facebook

Other Key Contacts

County Cllr Mark Sutton	01902 851682	mark.sutton@staffordshire.gov.uk
District Cllr Brian Cox	01785 840482	b.cox@sstaffs.gov.uk
District Cllr Ve Jackson	01785 840256	v.jackson@sstaffs.gov.uk
Staffordshire County Council	0300 111 8000	www.staffordshire.gov.uk
South Staffordshire District Council	01902 696000	www.sstaffs.gov.uk
Police	101 (non-urgent) 999 (emergency)	www.staffordshirepolice.org.uk
Crimestoppers	0800 555 111	www.crimestoppers-uk.org
Highways	0300 111 8000	www.highways@staffordshire.gov.uk

If you have any comments, compliments or criticisms to make about the work of the Parish Council or if you would like clarification on what we do, then please contact us in one of the following ways:

- By email - to office@wheatonastonparishcouncil.gov.uk (or to a Councillor, as above)
- By phone - to the Parish Office on 07495 789051
- By post/in person - to the Parish Office at Office FF028, South Staffs Business Hub, Wolverhampton Rd, WV8 1PE

2021 Parish Council Meetings – 9th Dec (Precept)

Please note that the Parish Council office will be closed from 15th December to 4th January 2022, emails and voicemails will not be monitored during this time.



Merry Christmas and a Happy 2022
From Lapley, Stretton & Wheaton Aston Parish Council