

## CHRISTMAS 2022

**Calling all stall holders for the Christmas light event!!!**

Bookings to secure your stall can now be made here:

<https://tinyurl.com/LSWAXmasStall> or email the office for a word version



## PLATINUM JUBILEE CELEBRATIONS



Thank you to everyone who came along to the Jubilee Celebrations at St Mary's School and at Lapley. Both events were a great success and full of community spirit. A big thank you and well done to all who volunteered their time to make the event a success. Their work is greatly appreciated.

## PLATINUM JUBILEE MUGS



The Parish Council presented Platinum Jubilee Mugs to the children of St Mary's School, Wheaton Aston as a lovely and lasting memento of Her Majesty the Queen's 70 years of service.

## ALLOTMENTS NEWS

Work continues to create the allotments in Broadholes Lane. An ecological survey is currently being commissioned. Follow the link below to join the waiting list for an allotment.

<https://tinyurl.com/LSWAPCAllotments>

## THE OAK TREE AT PRIMROSE

We are happy to report that the pollarding of the Oak Tree has been a great success and has promoted a dense head of foliage and branches. Forest of Mercia CIC have been to view it and advised it is a good example of successful rejuvenation. We will be installing a fence around the tree to protect the roots and discourage visitors in to the holes to help preserve the tree for years to come.



## JUBILEE TAPESTRY



Many thanks to Mr and Mrs Blakemore for presenting the Parish Council with a beautiful tapestry made to commemorate the Queens Platinum Jubilee. You can view it in its new home on display at the village hall.

## WHEATON ASTON CARNIVAL



There was a great turn out for the Wheaton Aston Carnival this year. Thank you to the organising committee, all the volunteers and those who arrived in style on a float!



# Green up your garden



In Britain, our household gardens make up an area significantly larger than all our nature reserves put together. This huge area of land can therefore make a massive difference when it comes to tackling climate change and helping wildlife.

Here are some ways you can help...

## Plant a tree

Trees are great at drawing in carbon from the atmosphere and storing it away. They also provide a home and food for wildlife, help reduce flooding, provide shade, remove pollutants from the air and produce oxygen.

Even small gardens can accommodate a tree - pick a smaller species like a fruit tree, crab apple or rowan. Always select trees that have been grown in the UK and that are health checked to reduce the risk of importing and spreading tree diseases.



## Plant for pollinators

Our bees, butterflies, hoverflies and other insects are in real trouble. You can help by planting pollinator-friendly plants. Try to have a range of flower types from open flat daisy-type flowers to deep tubular flowers such as minis to support as many insects as possible. If short of space, walls and frames can support climbing plants such as honeysuckle, climatis and rose.

If you have a lawn, let some of it grow longer. Offer bee hotels for nesting and over-wintering, or just leave long stems on plants and cut back in spring. Plants with seeds and berries are also great for birds and other wildlife.



## Keep surfaces natural

Hard surfaces can contribute to flooding, as water moves quickly across the surface rather than being able to soak into the soil. Climate change is already increasing stormy weather, and this is likely to continue.

Keeping as much land surface natural as possible helps reduce flood risk - rather than paving large areas, consider using gravel or other permeable surfaces wherever possible.



## Collect rainwater

Using collected rainwater rather than mains water is much more sustainable. Install a water butt to collect rainwater from your roof. Water using a watering can rather than hose pipes and sprinklers that can waste water. Mulch to keep soil moist to save having to water so often.



## Go peat-free

Peat bogs are a rare wildlife habitat, but they are also fantastic at locking up carbon from the atmosphere. Digging up peat to make garden compost releases that stored carbon and stops the peat bog being able to soak up more.

Buying peat-free compost is a great and simple way to help tackle climate change and support rare wildlife. Select plants that have been grown peat-free too. You could also make your own compost at home, which will save even more carbon.



## Provide a pond

A small pond is a useful source of water and habitat for many species; remember to provide an escape ramp or shelf for wildlife to climb out. If safety is a worry, consider providing a pebble-filled water feature instead.



## Fences

Boundary fences and walls are barriers to wildlife, particularly hedgehogs. This is important because a third of hedgehogs have been lost in the last 20 years, and one major cause is barriers to foraging behaviour that force them onto roads or other unsuitable places. Provide a 13x13 cm gap at the base of barriers between gardens so that all garden space is accessible.



## Go electric

The average petrol power tool emits 0.85kg carbon per litre of petrol used. At least one in five gardeners are thought to use power tools - if we all went electric it would save a lot of carbon!



## Help record wildlife

Keeping a record of the wildlife you see and sending those records in is a great way to help conservationists understand how different plants and animals are coping.

You can record wildlife you see on the i-record app. RSPB's Big Garden Bird Watch in January each year is a fun way to check up on our garden birds (see [www.rspb.org.uk](http://www.rspb.org.uk)) while [Naturescalendar.woodlandtrust.org.uk](http://Naturescalendar.woodlandtrust.org.uk) helps track the effects of climate change by recording natural events through the year - such as buds appearing and butterflies emerging.



## WHATS ON

# WATERSHED BENEFICE



Lapley with Wheaton Aston  
Blymhill and Weston-under-Lizard



The Churches in our Parish:  
All Saints, Church Road, Lapley ST19 9JS  
SS Mary's, The Green, Wheaton Aston ST19 9NH

<https://watershedbenefice.org/whats-on/>  
01785 840395  
email: [watershedbenefice@gmail.com](mailto:watershedbenefice@gmail.com).

## WHAT'S ON AT BREWOOD LIBRARY



Opening times:  
Tuesday to Friday 0900-1300 and 1400-1700  
Saturday 0930-1300  
[www.facebook.com/brewoodlibrary/](http://www.facebook.com/brewoodlibrary/)

## THE QUEEN'S GREEN CANOPY

LSWA PC is working with the Forest of Mercia CIC and St Mary's School to plant 60 trees in October or November as part of the Queen's Green Canopy.







Waste Savvy Staffs is a Staffordshire County Council led campaign to reduce waste in Staffordshire.

Follow the link below for more information  
<https://tinyurl.com/WasteSavvyStaffs>



**10% OFF**  
Composting bins

## Get Composting

Composting is nature's own way of recycling. It breaks down organic waste to produce a valuable resource which can be used on the vegetable garden or flower beds. Adding compost to the soil helps to add nutrients that help the growth of stronger healthy plants.



Get a discounted compost bin by visiting  
[www.GetComposting.com](http://www.GetComposting.com)  
and typing in your postcode.  
[www.doingourbit.info](http://www.doingourbit.info)



You can now sign up online for the 2022/23 Garden Waste Collection Service.

[www.sstaffs.gov.uk/gardenwaste](http://www.sstaffs.gov.uk/gardenwaste)

## BEST KEPT VILLAGE 2022

This year Lapley has been entered in the Best Kept Village Competition. We would love to have a working group so that we could enter all villages next year. Please let us know if you are interested in helping keep the parish tidy and can offer some time to litter pick etc

## ASSISTANT CLERK VACANCY

Do you want to join a friendly team?

**Assistant Clerk**  
(9 hours per week)

**Salary SCP 12 starting point**  
**£22,183**  
per annum (based on 37 hours per week)

**Mornings preferred**

**Office within Staffordshire Business Hub, South Staffordshire Council, Wolverhampton Road, Codsall**

The role of the Assistant Clerk is to provide administrative support to the Parish Clerk and the Parish Council.

The post holder will work closely with the Parish Clerk to help implement the aims and objectives of the Council. It is essential to have a flexible approach to work to meet deadlines. There may be some training and meetings outside of office hours as and when required.

Applicants will have the determination and organisational skills to manage a busy and varied workload. Applicants should ideally have an administration or professional qualification, administration experience and a good level of IT skills to include working with websites. Experience in using Office 365 is essential in particular Outlook, Word (including mail merge) and Excel. Knowledge of WordPress, MS forms, and Canva would be an advantage.

Whilst previous experience of working in local government is not critical, knowledge of administration relevant to Parish Councils would be useful along with a commitment to undertake sector relevant qualifications

**Closing Date: 8<sup>th</sup> July 2022 at 12 noon**

**It is anticipated that interviews will be held on Wednesday 13th July 2022**

**Please email the office to request the job description and person specification**

**To apply** send a covering letter and CV either by email to [office@wheatonastonparishcouncil.gov.uk](mailto:office@wheatonastonparishcouncil.gov.uk) or post to LSWA PC office F028 Staffordshire Business Hub, South Staffordshire Council, Wolverhampton Road, Codsall, WV8 1PX

**Please ensure that you can demonstrate how you meet the essential criteria for the post.**

Where we receive a high number of applications we may long list and conduct a telephone interview or Assessment Test before short-listing for interview.



You should now have received your new recycling bags for paper and card.  
<https://bit.ly/37y6AdP>

## PARISH COUNCILLORS

COUNCILLOR	WARD	EMAIL
A Anderson	Stretton	<a href="mailto:a.anderson@wheatonastonparishcouncil.gov.uk">a.anderson@wheatonastonparishcouncil.gov.uk</a>
E Dadd	Stretton	<a href="mailto:e.dadd@wheatonastonparishcouncil.gov.uk">e.dadd@wheatonastonparishcouncil.gov.uk</a>
M Griffiths	Lapley	<a href="mailto:m.griffiths@wheatonastonparishcouncil.gov.uk">m.griffiths@wheatonastonparishcouncil.gov.uk</a>
J Hodgkiss	Wheaton Aston	<a href="mailto:j.hodgkiss@wheatonastonparishcouncil.gov.uk">j.hodgkiss@wheatonastonparishcouncil.gov.uk</a>
W Millington (Chair)	Wheaton Aston	<a href="mailto:w.millington@wheatonastonparishcouncil.gov.uk">w.millington@wheatonastonparishcouncil.gov.uk</a>
R Nelson	Wheaton Aston	<a href="mailto:r.nelson@wheatonastonparishcouncil.gov.uk">r.nelson@wheatonastonparishcouncil.gov.uk</a>
T Noblett	Wheaton Aston	<a href="mailto:t.noblett@wheatonastonparishcouncil.gov.uk">t.noblett@wheatonastonparishcouncil.gov.uk</a>
V Renfrew	Lapley	<a href="mailto:v.renfrew@wheatonastonparishcouncil.gov.uk">v.renfrew@wheatonastonparishcouncil.gov.uk</a>
M Smith	Wheaton Aston	<a href="mailto:m.smith@wheatonastonparishcouncil.gov.uk">m.smith@wheatonastonparishcouncil.gov.uk</a>
S Whittingham	Wheaton Aston	<a href="mailto:s.whittingham@wheatonastonparishcouncil.gov.uk">s.whittingham@wheatonastonparishcouncil.gov.uk</a>
S Whittingham	Wheaton Aston	<a href="mailto:sue.whittingham@wheatonastonparishcouncil.gov.uk">sue.whittingham@wheatonastonparishcouncil.gov.uk</a>

Follow us on Facebook

[www.facebook.com/WAstonParish](https://www.facebook.com/WAstonParish)



**Parish Meetings** - All meetings will be held at Wheaton Aston & Lapley Village hall at 7:00pm unless other wise notified: July 14th, September 1st, October 20th Community meeting at 6:00pm followed by full council at 7:00pm, December 8th (precept meeting)

## OTHER KEY CONTACTS

County Cllr Mark Sutton	01902 851682	<a href="mailto:mark.sutton@staffordshire.gov.uk">mark.sutton@staffordshire.gov.uk</a>
District Cllr Brian Cox	01785 840482	<a href="mailto:b.cox@sstaffs.gov.uk">b.cox@sstaffs.gov.uk</a>
District Cllr Ve Jackson	01785 840256	<a href="mailto:v.jackson@sstaffs.gov.uk">v.jackson@sstaffs.gov.uk</a>
Staffordshire County Council	0300 111 8000	<a href="http://www.staffordshire.gov.uk">www.staffordshire.gov.uk</a>
South Staffordshire District Council	01902 696000	<a href="http://www.sstaffs.gov.uk">www.sstaffs.gov.uk</a>
Police	101 (non-urgent) 999 (emergency)	<a href="http://www.staffordshirepolice.org.uk">www.staffordshirepolice.org.uk</a>
Crimestoppers	0800 555 111	<a href="http://www.crimestoppers-uk.org">www.crimestoppers-uk.org</a>
Highways	0300 111 8000	<a href="mailto:www.highways@staffordshire.gov.uk">www.highways@staffordshire.gov.uk</a>

# PARISH MAP BOARD

The Parish Council has been working hard to produce a map of walks of the Parish. This will be sited on the Village Green at Wheaton Aston

## Walks around Wheaton Aston

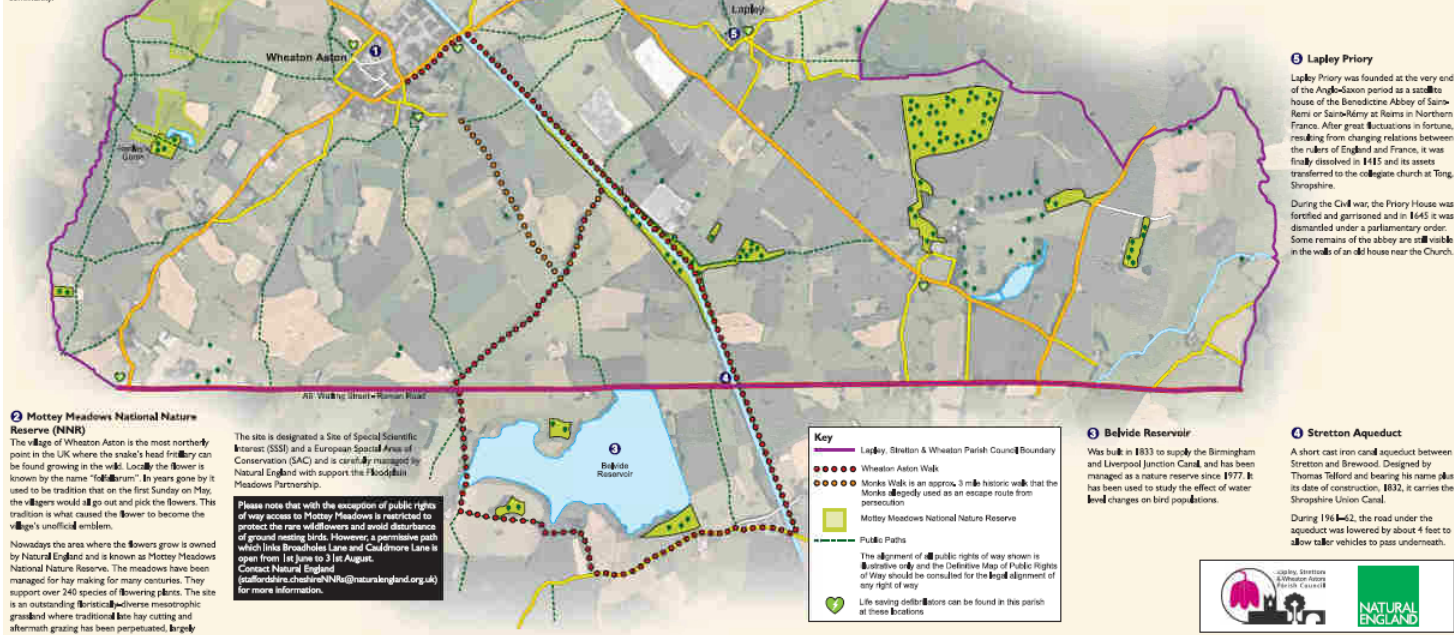
1 The first known reference to the parish of Lapley, Stretton and Wheaton Aston is in the Domesday Book.

In 1666 Wheaton Aston recorded 33 households chargeable for hearth tax and Lapley recorded 13.

In 1777 a fire destroyed 19 houses and 16 outbuildings in Wheaton Aston. Thatched roofs were removed for the spread and which houses were rebuilt they were all tiled.

During World War Two land to the north of the Parish was used as a training airfield. The land is now used mostly as farm land. Some buildings remain derelict whilst others have been recently renovated. A young pilot was killed when his plane crashed in a ploughed field on the outskirts of Wheaton Aston.

By 2020 there are over 1000 homes in the parish and the parish continues to grow into a vibrant and inclusive community.



**IMPORTANT INFORMATION FOR RESIDENTS AND BUSINESSES**

**ROAD CLOSURES**  
**THURSDAY 4 AUGUST**  
**COMMONWEALTH GAMES**  
**CYCLING TIME TRIAL**

SCAN HERE

**CYCLING TIME TRIAL**  
**COMING TO A ROAD NEAR YOU!**  
[birmingham2022.com/getset](https://birmingham2022.com/getset)

## THE COMMONWEALTH GAMES 2022

The commonwealth games is coming to Birmingham this year. Two key dates for South Staffordshire are:  
- 23rd July. The Queen's baton relay will pass through Codsall  
- 4th August. The cycling time trial will pass through the District.

Follow <https://tinyurl.com/LSWAPCCG>



## WHEATON ASTON ARTS

An exhibition by Wheaton Aston Arts is to be held in St Mary's church on Saturday 26th November 2022 when there will be a variety of different art works on display including paintings, drawings, wood sculptures, wood turning, photographs, embroidery, etc. If any creative arts and crafts enthusiasts would like to showcase their work, Wheaton Aston Arts would welcome anyone involved in creative skills to come and join in. There would be a small charge of £4.00 for a large table, £2.00 for a small table and 50p for individual items. Margaret Bailey who is chairperson of Wheaton Aston Arts says, "We want to show how creative Wheaton Aston residents can be". Anyone interested should contact Margaret on 01785 840830 or email to [email@margaretbailey.co.uk](mailto:email@margaretbailey.co.uk) for details.



Lapley, Stretton & Wheaton Aston Parish Council  
Office FF-028, The Business Hub  
Wolverhampton Road, Codsall, WV8 1PE  
01902 842556  
[office@wheatonastonparishcouncil.gov.uk](mailto:office@wheatonastonparishcouncil.gov.uk)  
[www.facebook.com/WAstonParish](https://www.facebook.com/WAstonParish)

Recipient of the:

